

- IT** Manuale uso e manutenzione
GB Use and maintenance manual



IMPORTANTE!

Prima di installare e utilizzare la macchina è obbligatorio che l'installatore e l'utilizzatore leggano e comprendano in tutte le sue parti il presente manuale.

Il manuale è parte integrante della macchina e deve obbligatoriamente essere conservato per futuri riferimenti fino alla demolizione della macchina.

IMPORTANT!

Before installing and using the machine imperative that the installer and the user read and understand all parts of this manual.

The manual is an integral part of the machine and must necessarily be kept for future reference until the demolition of the machine.

SOLE & TOSCANO



Designed in Italy Patent pending US Patented 29/489,687



Thanking you for the preference you gave us, IDROBASE GROUP Srl is glad to include your firm in the list of its preferred customers and relies that the use of this machine will be fully satisfactory.

This manual is intended to provide all instructions and precautions to be followed to properly use the machine in safety and productivity; It is therefore appropriate that the operator consult this manual before using the machine.

The manual must always be available to the operator and kept in good condition; is the user's responsibility to worry about the training of personnel assigned to the use and maintenance for safety purposes . The replacement of parts not manufactured or approved by the fingers **IDROBASE GROUP Srl** may affect the performance or durability of the machine and create the potential risk to the machine itself or the staff, as well as make void the warranty.

The descriptions and illustrations contained in this publication are not binding; **IDROBASE GROUP Srl** therefore reserves the right to make changes at any time, without obligation , to update the publication , to change bodies , details, accessories supplies for further improvement, or for any other manufacturing and / or commercial function greater safety.

The instructions, drawings , tables, and all that is contained in the following file are technical in nature and reserved, for this reason, any information can not be communicated to third parties without written authorization from **IDROBASE GROUP Srl** that is its sole owner.

The product can not be sold in Italy and Germany

In case of dispute the valid jurisdiction is that of Padua (Italy).

GOOD JOB !

1 - LAYOUT OF MANUAL	
1.1 INFORMATION	22
2 - APPLICATIONS	
2.1 GENERAL WARNINGS	23
2.2 MACHINE IDENTIFICATION	23
2.3 WARRANTY	23
2.4 CONDITIONS FOR RETURN	24
2.5 CASES THAT RELIEVE THE MANUFACTURER OF ANY RESPONSIBILITY	24
2.6 SAFETY	24
2.7 SIMBOLS	25
2.8 GLOSSARY	26
2.9 NOTES ON THE LABELS	26
3 - PRODUCT PRESENTATION	
3.1 PURPOSE	27
3.2 COMPOSITION	27
4 - TECHNICAL DATA AND SPECIFICATION	
4.1 TECHNICAL DATA	28
5 - UNPACKING	
5.1 UNPACKING	29
5.2 TOWER PACK	29
5.3 BASE PACK	29
6 - ASSEMBLY AND INSTALLATION	30
7 - OPERATION AND USE	
7.1 ELECTRICAL CONTROLS	31
7.2 RANGE APPLICATIONS	32
7.3 WORKING LIMITS	32
7.4 SAFETY DEVICES	32
7.5 LABELS	32
7.6 TRAINING	32
8 - CLEANING AND DISINFECTING	
8.1 CLEANING AND DISINFECTING	33
8.2 REINSTALLATION AND REUSE	33
8.3 DEMOLITION AND DISPOSAL	33
9 - MAINTENANCE	
9.1 MAINTENANCE	34
10 - DESTRUCTION AND DISPOSAL	35
11 - CAUSES AND SOLUTIONS	36



1.1 INFORMATION

This manual is an essential document for the safe use of the equipment. It should be kept in a safe place and must be accessible to the user / repairer to ensure the correct use of the machine and thereby avoid any risks through incorrect Installation, misuse or negligence.

We recommend to follow carefully the instructions below, as the manufacturer is not liable for any damage caused to persons or property, or suffered from the machine when used differently than what described, or if you do not comply with maintenance and safety requirements.

This manual should always be available to the user and/or maintenance, which must be informed about the correct use of the machine and any residual risks.

The instructions in this manual do not supersede the safety and technical data, installation and also use for operating, which are applied directly on the machine.

The user must follow the safety regulations to the country of installation, in addition to the rules dictated by common sense.

You should not use the machine if you note any defects or damages that could compromise the original security; the responsible for the installation, the user or maintenance technician has to report any anomalies to the manufacturer.

The machine is built for specific applications. It should not be changed and/or used for applications different than those specified in the field of use.

Instructions, drawings, tables and all that is contained in the following documents are of technical nature, and therefore any confidential information can not be provided to third parties without the written permission of **IDROBASE GROUP Srl** which is the sole owner.

Descriptions and illustrations contained in this publication do not mean demanding; **IDROBASE GROUP Srl** therefore reserves the right to make changes at any time to bodies, details, accessories supplies, appropriate for any manufacturing or commercial improvement.

2.1 GENERAL WARNINGS

BEFORE INSTALLING AND USING THE MACHINE IT IS COMPULSORY THAT THE INSTALLER AND THE USERS READ AND UNDERSTAND ALL OF THE INFORMATION IN THIS MANUAL. THIS MANUAL IS AN INTEGRAL PART OF THE MACHINE; IT MUST ALWAYS BE AVAILABLE DURING THE NORMAL OPERATION OF THE MACHINE AND IT IS IMPERATIVE THAT IT IS RETAINED FOR FUTURE REFERENCE UNTIL THE DISPOSAL OF THE MACHINE.

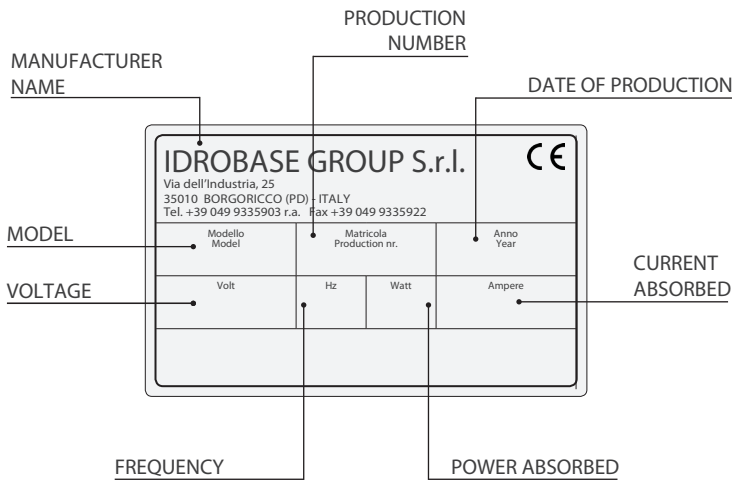


THE COPYRIGHT OF THIS MANUAL "INSTRUCTION FOR INSTALLATION AND USE" IS THE PROPERTY OF IDROBASE GROUP SRL. ALL OF THE INFORMATION (TEXT, DRAWINGS, DIAGRAMS, ETC.) CONTAINED IN THIS MANUAL IS CONFIDENTIAL. NO PART OF THIS MANUAL CAN BE REPRODUCED AND DISTRIBUTED (EITHER IN PART OR COMPLETE) BY ANY MEANS OF REPRODUCTION, (PHOTOCOPIES, MICROFILM, OR OTHER) WITHOUT WRITTEN AUTHORIZATION FROM IDROBASE GROUP SRL.



2.2 MACHINE IDENTIFICATION

The machine is distinguished by a manufacturer's plate



2.3 WARRANTY

All of our equipments are subjected to accurate and rigorous tests and are covered under warranty of 1 year in accordance with statutory law from manufacturing defects.

THE WARRANTY IS INVALIDATED IF THE USE OF THE MACHINE DOES NOT CONFORM TO THE INSTRUCTIONS FOR USE CONTAINED IN THIS MANUAL, AND IF THE ORIGINAL COMPONENTS, ACCESSORIES, SPARE PARTS AND CONTROL SYSTEMS ARE NOT USED.

The warranty starts from the date of purchase within the meaning of the act concerning warranty in the country of sale.



IDROBASE GROUP SRL undertakes to repair or replace free of charge any parts that have manufacturing faults within the warranty period. Faults not clearly due to materials or manufacturing shall be examined at one of our Technical Assistance Centres or at our headquarters and charged according to the results. The following are excluded from the warranty: accidental damage due to transport, negligence or inappropriate treatment, incorrect or improper use or installation, i.e. not complying to the instruction manual, and any situations that do not depend on machine standards and operation, or on electrical and equipment use. The warranty is invalidated if the equipment is repaired or tampered with by unauthorized third parties. The equipment shall not be replaced nor the warranty extended after it has been repaired for faults. The warranty does not cover cleaning the working parts or replacing consumable components such as pump oil, nozzle, etc.

IDROBASE GROUP SRL IS NOT LIABLE FOR ANY DAMAGE TO PERSONS OR OBJECTS DUE TO INCORRECT INSTALLATION OR IMPROPER USE OF THE EQUIPMENT.



2.4 CONDITIONS FOR RETURNS

It will be the responsibility of the end user to return the product to the retailer; or telephone for further information to the number

+39 049 93 35 136

2.5 CASES IN WHICH THE MANUFACTURER IS NOT LIABLE

The manufacturer is not liable for damage caused by the following:

- Improper use of the machine or use by untrained people.
- Use of non genuine spare parts.
- Non-compliance with maintenance.
- Unauthorized modifications or operation.
- Non-observance, in total or part, of the instruction manual.
- Non-observance, in total or part, of the safety regulation in force in the country where the machine is used.

READ AND SAVE THESE INSTRUCTIONS

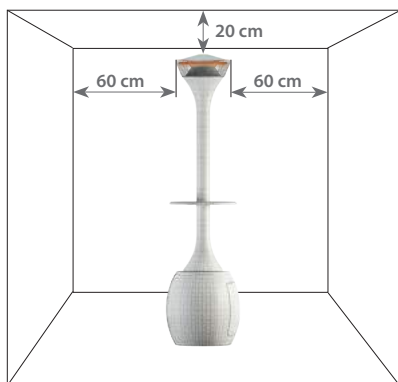
2.6 SAFETY

SOLE is well-advanced from a technical point of view and for a proper installation, good operation, proper use and maintenance, it needs trained, responsible staff who has to comply with the following rules of safety and conduct.

- The device can be used by children aged 8 and by people with physical, sensory and mental capabilities or without 'experience and knowledge appropriate **ONLY IF THEY HAVE BEEN EDUCATED** about the use of the machine and have understand the potential dangers. Children should not play with the appliance. Cleaning and maintenance should not be performed by children unless supervised by an adult.
- The electrical system connected to the machine **MUST BE** made in compliance with the laws in force in the country of installation.
- You **MUST** follow the rules imposed by the Fire Department or by local entrusted bodies.
- It is **RECOMMENDED** the presence of a differential circuit breaker, with a sensitivity of 30 mA above the socket or power plant.
- In dangerous situations, the machine **SHOULD BE STOPPED** immediately.
- **DO NOT** touch the plug with wet hands or feet!
- The integrity and insulation of the electric cable and equipment **MUST BE** checked, because the work environment is necessarily exposed to water and humidity conditions that preclude the natural system insulation.



- Avoid accidental operation. You **MUST** place the switch OFF before inserting or removing the plug from the socket.
- **DO NOT** use the machine if the cable is damaged or worn; disconnect the device from the network and contact an authorized service center.
- **DO NOT** pull the cord to remove the plug.
- **KEEP** the machine clean and tidy.
- **DO NOT** remove or tamper with the safety devices and protection installed on the machine.
- It is **RECOMMENDED** not to place the machine on ramps or sloped floor, possibly remember to lock the wheels with the appropriate mechanisms.
- During the handling of the machine on sloping surfaces, potholes or on particularly unstable ground there is a risk that the machine chutes. The movement of the machine under the circumstances described above **MAY RESULT** in malfunction due to sudden impact or overturning.
- **ARE OBLIGED** to place the machine on a flat and level for both installation and storage.
- Absolutely **NO MOVE** the machine during operation.
- Absolutely **NO MOVE** the machine when connected to mains electricity.
- The table (see par. 3.2) **MUST BE** used to place objects to a total load under 5 kg. **DO NOT** sit or rest.
- **DO NOT** install the machine near flammable materials (especially on environments with airborne particles: plastics, resins, acids, inks, etc.).
- Keep at a distance not less than 2 meters from flammable materials such as furniture, pillows, bedding, paper, clothing, tents, etc.
- **DO NOT USE** The machine near splashing water or subjected to environments with high humidity (mist).
- **DO NOT WASH** the machine with high pressure washers.
- **DO NOT COVER** the heater when is working to avoid overheating.
- **DO NOT TOUCH** the heater when it is on.
- **USE** the machine outdoors **ONLY** coverage;
- **IN CASE OF RAIN**, the machine must be covered (after 60 minutes after turning off the heater) to cover use code IT. 0965 or carried away.
- **INSTALL** the unit at a minimum distance of 20 cm from the ceiling and from 60 cm side walls.



2.7 SYMBOLS

In this manual the symbols depicted describe important functions of the machine for the installation, and for the use and disposal. For correct and safe use of the machine the operator must read carefully all parts of this manual paying special attention to the warning symbols and manufacturer's plate.

PAY ATTENTION TO SAFETY IN THE WORKPLACE!

FOLLOW THE INSTRUCTIONS DISPLAYED ON THE WARNING SIGNS. FAILURE TO DO SO MAY CAUSE SEVERE INJURY OR ENDANGER PERSONAL SAFETY. ENSURE THAT THE SIGNS ARE PRESENT AND LEGIBLE. IF THEY ARE NOT, THEY SHOULD BE FITTED OR REPLACED.

THIS MANUAL MUST BE READ BEFORE USING OR CARRYING OUT MAINTENANCE OR OTHER OPERATIONS ON THE MACHINE. DO NOT ALLOW UNAUTHORIZED PERSONNEL TO USE THE MACHINE.

2.8 GLOSSARY

The following symbols advise the operator of dangerous situations or the important operations for the correct running of the machine.

WARNING SIGNS!

THIS MANUAL MUST BE READ BEFORE USING OR CARRYING OUT MAINTENANCE OR OTHER OPERATIONS ON THE MACHINE.

INFORMATION!

THE INFORMATION CONTAINED IN THIS MANUAL SHOW THE RIGHT PROCEDURES FOR THE CORRECT MAINTENANCE AND USE OF THE MACHINE

INFORMATION!

THE CAUTION INDICATES SPECIAL PROCEDURES THAT IF NOT OBSERVED CAN CAUSE DAMAGE TO PERSONS OR PROPERTY.

WARNING!

MAINTENANCE OR REPAIRS MUST NEVER BE CARRIED OUT WHILE THE MACHINE IS LIVE/ SWITCHED ON. ALWAYS DISCONNECT FROM THE ELECTRICAL SUPPLY BEFORE CARRYING OUT REPAIRS OR REMOVING THE COVER.

WARNING!

PROTECTIVE GARMENTS SHOULD BE WORN.

2.9 NOTES ON THE LABELS

Never remove the labels from the machine. If they have deteriorated, ask your retailer or the manufacturer directly for a replacement.

THE MANUFACTURER IS NOT LIABLE IN ANY WAY IN THE EVENT OF ACCIDENTS OR BREAKAGE DUE TO NON-OBSERVANCE OF THE WARNINGS.

IN CASE OF LOSING THIS MANUAL OR ANY MISUNDERSTANDING CONTACT THE RETAILER IMMEDIATELY.

THE STICKER SHOWING THE WAY OF USE AND RESTRICTIONS HAS NEVER TO BE REMOVED FROM THE PLACE THEY ARE.



3.1 PURPOSE

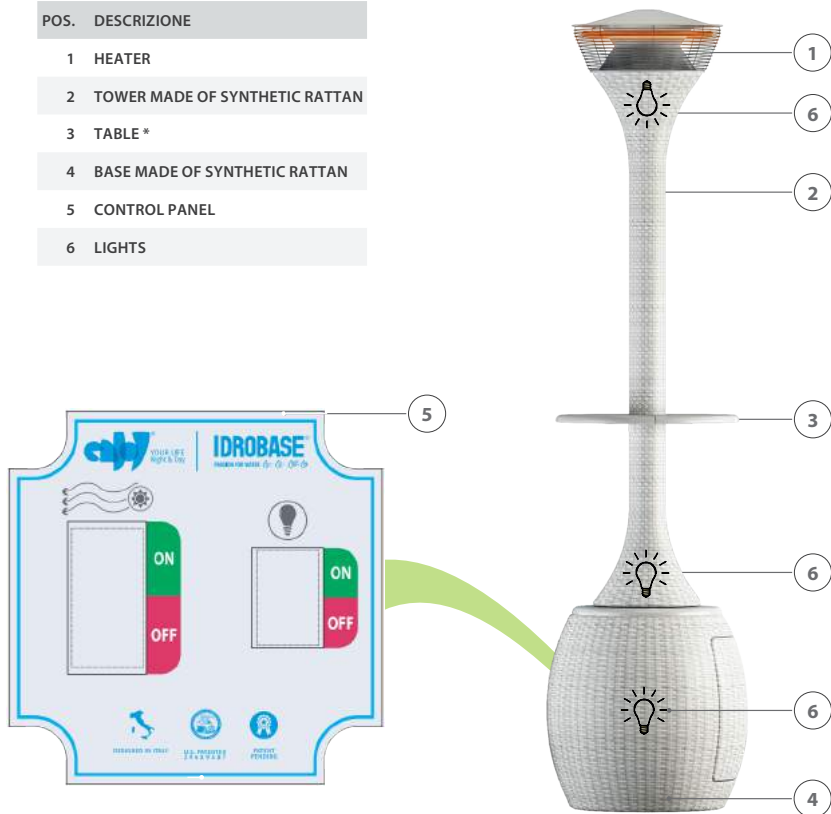
SOLE heats the surrounding environment, suitable for the cold season. The civil applications are:

- Gardens;
- Terraces;
- Patio;
- Gazebo.

3.2 COMPOSITION

The main components of the machine are:

POS.	DESCRIZIONE
1	HEATER
2	TOWER MADE OF SYNTHETIC RATTAN
3	TABLE *
4	BASE MADE OF SYNTHETIC RATTAN
5	CONTROL PANEL
6	LIGHTS

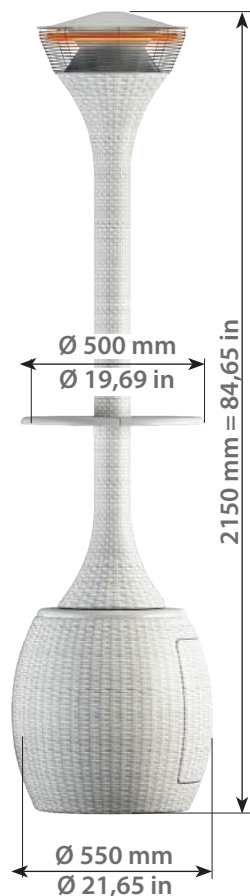


* Toscana version has table with smoking kit

4.1 TECHNICAL DATA

The following table describes models and specifications of the machine.

ZX.5180	SOLE WHITE	ZX.5181	SOLE WOODEN	ZX.5182	SOLE BROWN
ZX.5180-S	TOSCANO WHITE	ZX.5181-S	TOSCANO WOODEN		
Peso	40 Kg 88 lb	Tensione	230 V (6,8 A)	Potenza	1530 W 2 HP
Carico Max Tavolo	5 kg 11 lb	Frequenza	50 Hz		



INFORMATION!

TO GET THE PROPER EFFECT OF FOGGING MUST BE RESPECTED THE VALUES OF THE POWER SUPPLY.

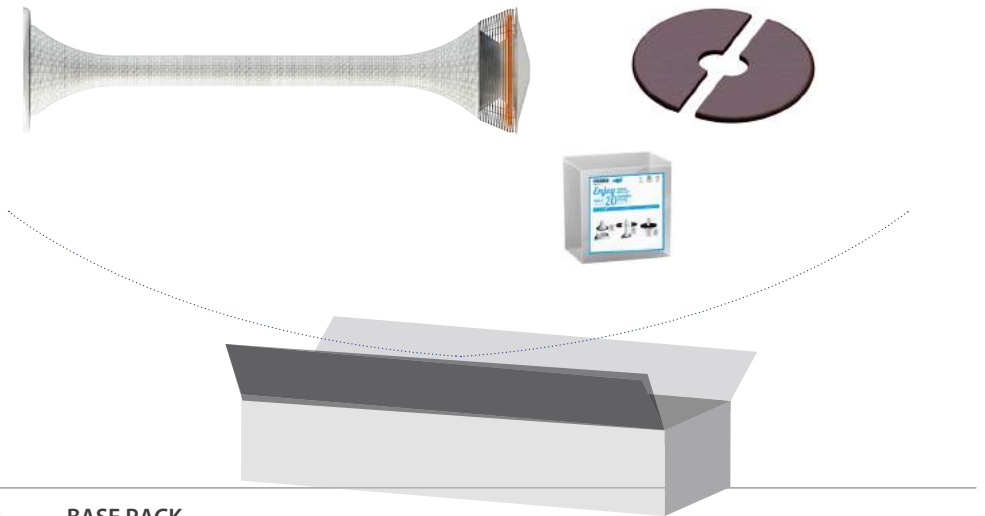


5.1 UNPACKING

SOLE is shipped in two parts, packed in customized packaging. After having unpacked the machine make sure that the machine is complete, including all of the requested accessories.

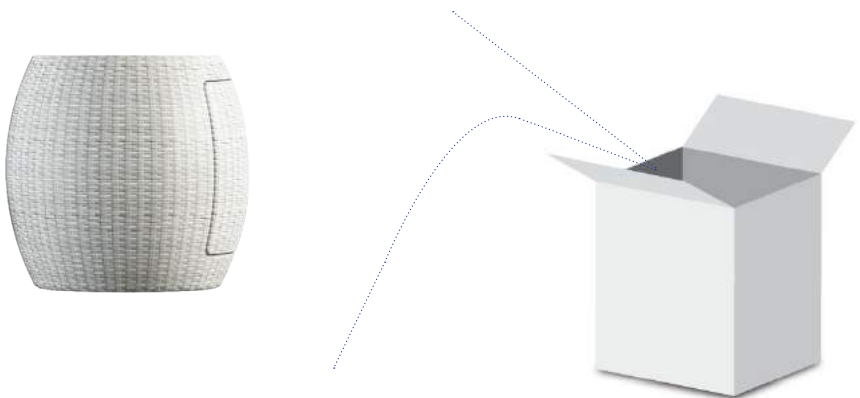
5.2 TOWER PACK

- Rattan tower with heater, electric connection;
- Table (N.2 semitables with centering pins);
- Assembling blister packaging.



5.3 BASE PACK

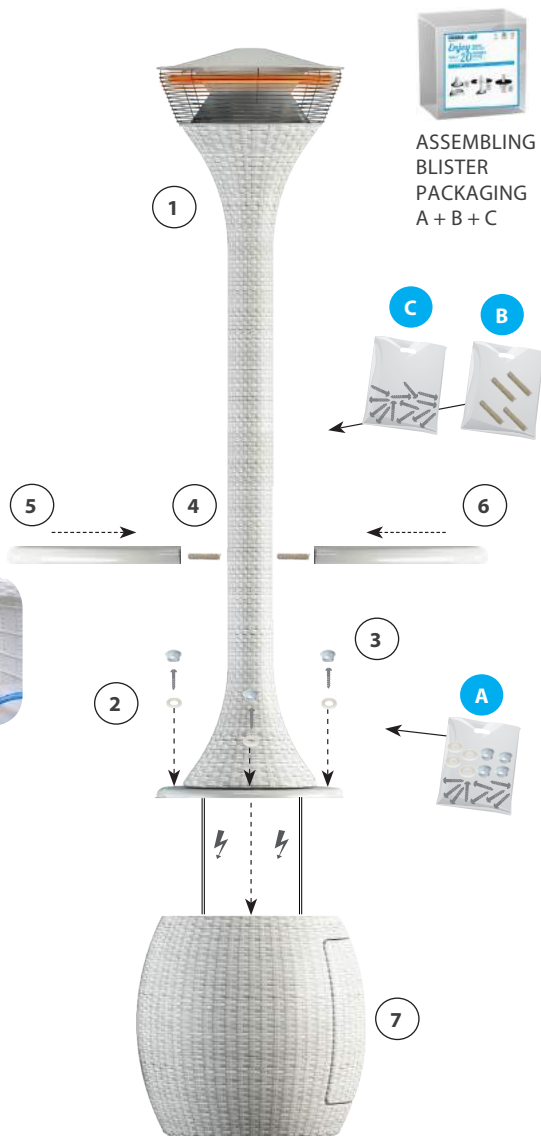
- Rattan base with control panel;



1. PLACE THE TOWER HORIZONTALLY AND ON THE SIDE OF THE BASE IN RATTAN.
2. OPEN THE DOOR OF THE BASE IN RATTAN
3. INSERT INTO THE CENTER HOLE OF THE RATTAN BASE, ELECTRIC CABLES
4. CONNECT THE CABLES OF THE LIGHTS AND HEATER.



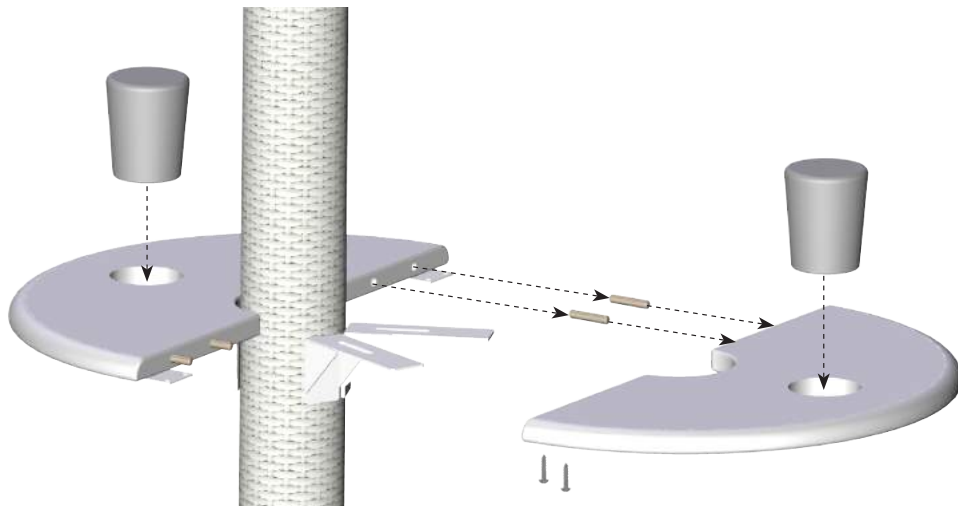
5. FIX THE TOWER TO THE BASE TIGHTENING SCREWS (KIT A).
6. INSERT THE HOLE CAPS (KIT A).
7. INSERT THE CENTERING PINS IN THE TWO SEMI-TABLES (KIT B).
8. JOIN THE TWO SEMI-TABLES POSITIONED ABOVE THE BRACKETS ATTACHED TO THE RATTAN TOWER.
9. FIX SEMI-TABLES TIGHTENING THE SCREWS (KIT C).



ASSEMBLING BLISTER PACKAGING A + B + C

THE ASSEMBLY MUST BE MADE IN TOTAL SAFETY. IT IS THE RESPONSIBILITY OF THE INSTALLER TO ENSURE THE SAFETY OF PERSONNEL.

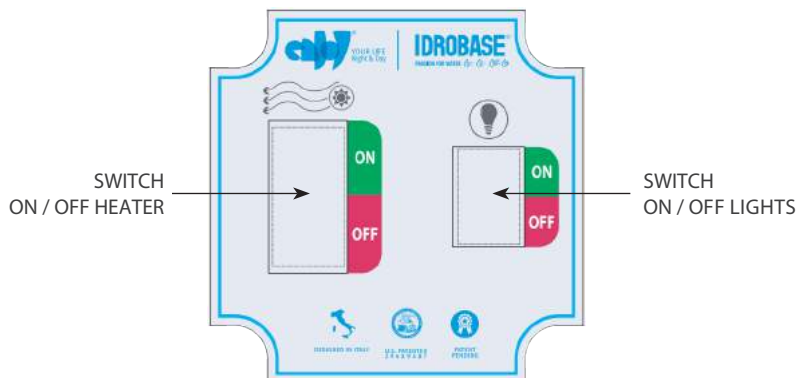
ASSEMBLY OF SMOKING KIT



1. FOLLOW THE STEPS FROM 1 TO 7 AND POINT 11 OF THE PREVIOUS PAGE.
2. INSERT THE CENTERING PINS TO THE TWO SEMI-TABLES.
3. JOIN THE TWO SEMI-TABLES BY POSITIONING IT ON THE BRACKETS FIXED TO THE TOWER RATTAN.
4. FIX THE TABLE ASSEMBLED ON THE BRACKETS BY TIGHTENING THE SCREWS.
5. FIX THE JOINING PLATES TABLES WITH SCREWS.
6. INSERT THE ASHTRAYS INTO THE HOLES ON THE TABLES.

7.1 ELECTRICAL CONTROLS

Opening the door of the base rattan you have access to the control panel. Using the two switches turn on or turn off the lights and / or heater



7.2 RANGE OF APPLICATIONS

- Heating of indoor and outdoor areas (outside only if this coverage to rain) such as bars, restaurants, swimming pools, discos, amusement parks, meeting places.

WARNING!

DON'T USE IN ENVIRONMENTS WHERE EXPLOSIVE POWDERS ARE PRESENT.

WARNING!

THE MANUFACTURER IS NOT RESPONSIBLE FOR ANY DAMAGE CAUSED BY IMPROPER OR INCORRECT USE OR FAILURE TO OBSERVE THE RULES SET OUT IN THIS MANUAL.

7.3 WORKING LIMITS

Prolonged inactivity (machine stopped) with temperatures lower than 5°C (5 degrees centigrade) can cause damage or breakage to the parts in general. It is therefore advisable to empty the system completely. For more information contact the retailer or manufacturer. In case of rain, the machine must be covered (after 60 minutes after turning off the heater) to cover use code IT. 0965 or carried away.

7.4 SAFETY DEVICES

In the case of overturning of the equipment with the heater switched on, a safety switch and strip off the power supply to the heater.



7.5 LABELS

On the machine and manual signs and pictograms are shown in order to highlight or draw any hazardous situations or behaviors to be followed for safe operation.

WARNING!

NEVER PUT ANY PART OF THE BODY AND / OR OBJECTS THROUGH THE OPENINGS OF THE FAN, WHERE THERE IS A NEED, YOU MUST FIRST DISCONNECT THE POWER SUPPLY.

WARNING!

NEVER REMOVE THE SAFETY DEVICES WITHOUT FIRST DISCONNECTING THE VOLTAGE AND ABSOLUTELY DO NOT TURN ON THE MACHINE WITHOUT THESE DEVICES.

7.6 TRAINING

It is the responsibility of the owner and/or supervisor to assign an operator and train him in the use of the machine according to the instructions in this manual.

WARNING!

THE SYSTEM MUST BE USED ONLY BY A TRAINED OPERATOR, WHO USES THE MACHINE IN ACCORDANCE WITH THE INSTRUCTIONS CONTAINED IN THIS MANUAL AND/OR THE MANUAL FOR ANY EXTERNAL EQUIPMENT. NO LIABILITY SHALL BE ACCEPTED FOR ANY IMPROPER USE OF THE MACHINE NOT ENVISAGED IN THIS MANUAL.



8.1 CLEANING AND DISINFECTION

Every day the tank must be emptied and filled with clean water the next day.

After a period of inactivity of the system, before to reuse it, it is better to clean. For this operation contact a qualified technician or the retailer.

8.2 REINSTALLATION AND REUSE

To reuse the machine after a period of inactivity carry out the steps in section 6.

8.3 DESTRUCTION AND DISPOSAL

WARNING!

THE DESTRUCTION OF THE MACHINE MUST BE CARRIED OUT ONLY BY A TRAINED PERSON OR BY A QUALIFIED TECHNICIAN.

When it has been decided to destroy the machine and render it unusable it is recommended that all parts which could be dangerous are rendered safe, removing all of the electrical components, while conforming to current legislation regarding the scrapping of these materials. The various components should be brought to the appropriate recycling centres.

WARNING!

THE DISPOSAL OF THE MACHINE MUST BE CARRIED OUT ACCORDING TO THE LAWS OF THE COUNTRY IN WHICH IT IS TO BE DISPOSED.



FUR FURTHER INFORMATION CALL

+39 049 93 35 136

All maintenance should be performed with the maximum safety of the operator and the machine stops completely.

WARNING!

BEFORE STARTING ANY TYPE OF INTERVENTION DISCONNECT THE POWER SUPPLY AND MAKE SURE THE MACHINE IS LEVEL AND SECURE TO PREVENT SLIPPING AND UNEXPECTED MOVEMENT.

WARNING!

TO ENSURE THE SAFETY OF THE MACHINE, WE RECOMMEND USING ONLY SPARE PARTS AUTHORIZED BY THE MANUFACTURER. DO NOT PERFORM TEMPORARY REPAIRS OR DANGEROUS.



9.1 MAINTENANCE

Check annually the functioning of the electrical system and check the fastening of the links. The change of temperature and possible vibrations can cause loosening of the electrical connections with its overheating.

WARNING!

IT IS GOOD TO REMEMBER THAT THE MAINTENANCE CARRIED OUT PROPERLY, CAN MINIMIZE THE DOWNTIME DUE TO FAILURE.

A REPAIR DONE IN A TIMELY MANNER TO AVOID FURTHER DETERIORATION.

USE AS MUCH AS POSSIBLE, ORIGINAL SPARE PARTS.

WARNING!

THE DESTRUCTION OF THE MACHINE MUST BE CARRIED OUT ONLY BY A TRAINED PERSON OR BY A QUALIFIED TECHNICIAN.

When it has been decided to destroy the machine and to render it unusable, It is recommended that all parts which could be dangerous are rendered safe, removing all of the electrical components, while conforming to current legislation regarding the scrapping of these materials. The various components should be brought to the appropriate recycling centres.

WARNING!

THE DISPOSAL OF THE MACHINE MUST BE CARRIED OUT ACCORDING TO THE LAWS OF THE COUNTRY IN WHICH IT IS TO BE DISPOSED.



The following table shows the drawbacks encountered and remedies that can be made also directly from the user.

PROBLEM	CAUSES	SOLUTIONS
The machine doesn't start	<ul style="list-style-type: none"> Machine not connected to the electricity grid Faulty electrical components 	<ul style="list-style-type: none"> Connect the plug to the power outlet Call Service
The machine does not turn off	<ul style="list-style-type: none"> Faulty components 	<ul style="list-style-type: none"> Disconnect the plug from the power outlet and contact the service center
The light does not turn on	<ul style="list-style-type: none"> Machine not connected to the electricity grid Faulty light 	<ul style="list-style-type: none"> Connect the plug to the power outlet Replace the light
The heater does not work	<ul style="list-style-type: none"> Machine not connected to the electricity grid Faulty heater 	<ul style="list-style-type: none"> Connect the plug to the power outlet Call Service

FOR REQUESTING SERVICE CALL NUMBER

+39 049 9335903



idrobaser

www.idrobaser.com



perfectcool

www.perfectcool.it



idrotech

www.idrotech.com



club dei riparatori

www.sparesclub.com

IDROBASE[®]
PASSION FOR WATER



Idrobaser Group S.r.l. • www.idrobasergroup.com

• Via dell'Industria, 25, 35010, BORGORICCO (PD) ITALY

• +39 049 9335903 • Fax +39 049 9335922

• @ info@idrobasergroup.com